



# Annual Report



2021 - 2022



## RESET



Lake Aurora  
Christian Assembly,  
Inc.  
Summer Camp & Retreat Center  
Lake Wales, Florida



Sunset at the Farquhar Deck.

## There's just something about this place...

Lake Aurora Christian Assembly, Inc. consists of 75 member churches throughout central Florida with a total of 134 area churches participating in the ministry at Lake Aurora.

The Lake Aurora campus has expanded from its original 20 acres to 80 acres. The year round staff consists of 8 full time staff members and two part time staff along with an operational team of numerous seasonal staff.

## September 2022

Inside these pages are numbers and statistics, but what it represents are lives changed and opportunities seized even among a seemingly never-ending virus. Operations have begun to feel more 'normal,' but we have learned some lessons we are bringing into future ministry and our foundation of over 75 years of service. Since 1947, Lake Aurora has faced numerous hurdles, and we will continue to look to God's guidance and provision as we move forward with future ministry in programs and facilities.

Partnership with our supporting churches makes the Kingdom stronger. We can offer opportunities for learning, reflection, and relationship building in an environment that reflects God's beauty and creativity in a natural setting while always striving to make the entire campus accessible to participants regardless of abilities.

## Making a difference for over 75 years...

Encouragement from our friends and partners...

"Having been a camper, volunteer, and employee here, I can confidently say lake Aurora is amazing. Doing everything with excellence, excitement, and love, their care for campers and employees showcases Christ's love for us. They provide an awesome experience for campers that enables them to unplug from the frenzy of daily life, have a ton of fun, and connect with God. Plus, the food is always fantastic." S. Powers, Facebook Review

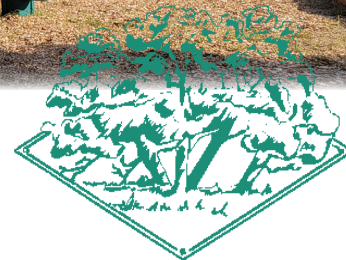
"Every minute at camp was safe and solid, protection from our storm at home.... There was nowhere on earth we would rather be."

Former camper in a 2022 letter with their donation

Hillside Playground added in 2022 completely funded by donations



# Lake Aurora... A Past with a Future.





# Lake Aurora

dedicated to  
Youth & Families

## Mission Statement

Camp: A Place to Experience God's Creation and See Lives Change

## Lake Aurora Christian Camp & Retreat Center

### Purpose Statements

#### I Youth Camps

Making the camper aware that their whole life is lived before God and equipping them to live in harmony with the will of God by teaching them biblical principles and giving them opportunity to practice them.

This is done through a variety of programs using elements of nature, role modeling, skill development, Bible study and worship, and social and recreational interaction.



*The closing prayer circle is a beautiful tradition that continues to this day.*

#### II Retreats and Camps for Adults & Families

Helping men, women, and families to spend time addressing specific issues, developing skills and gifts, exploring ministry and vocational possibilities, ministering to each other, worshipping and praising God.

This is done through programs targeted to specific areas of interest or need, utilizing proficient teachers, facilitators, and maximizing the rural nature of the Lake Aurora setting.



#### III Equipping People for Service to Other Cultures

Creating special programs, often in cooperation with others, to train, equip, and send Christian people to service opportunities around the world.



### Statement of Faith

Our core belief hinges on two principles: 1) the Bible is the only inspired Word of God, 2) Jesus alone is both Lord and Christ. He really lived, He died for our sins, He was raised from the dead, and He is one with God.

Because these are core beliefs, we are unable, by conscience, to accommodate groups whose teachings and practices are contradictory to these beliefs.



2022

TRUSTEES OF LAKE AURORA CHRISTIAN ASSEMBLY, INC

East Area (East of U.S. 27)

NAME	CHURCH	TERM	
		BEGAN	ENDS
Chuck Babbino	Real Life Christian, Mt Dora	2019	2024
Aaron Fusselman	Cornerstone, Vero Beach	2018	2022
Steve Greshel	Christ's Church on the Move, Lake Wales	2020	2022
Bob Mehlenbacher	Kissimmee Christian	2021	2023
Brian Palmer	Lake Eustis Christian	2020	2022
Todd Thomas	Sebastian Christian	2021	2023

West Area (West of U.S. 27)

NAME	CHURCH	TERM	
		BEGAN	ENDS
Kim Atkinson	New Beginnings, Tampa	2019	2023
Jen Canary	First Christian, Wauchula	2019	2023
Tim Paul	Legacy Christian, Lakeland	2022	2024
Brad Weaver	First Christian, Cape Coral	2017	2022

Adding special inflatable feature for our 1st-3rd grade campers.



Excerpts - By-laws of Lake Aurora Christian Assembly, Inc. regarding Trustees

Article VII

Section 1. - "The business, property and affairs of the corporation shall be managed by a Board of Trustees"

Section 2.

- a. "The Board of Trustees shall have not more than sixteen (16) nor less than three (3) persons."
- b. "An effort shall be made to maintain an equal number Trustees from Member Congregations located East and West of US Highway #27."

Section 3.

The Trustees shall be elected by Representatives from Member Congregations at the annual meeting during the month of October.

Membership Congregations in the Corporation are defined in Article V of the Bylaws.



## Glimpse of 2021-2022 year. God's hand is in each struggle and victory:

In this season, we experienced guests and campers returning to our campus to reconnect with God through His creation and to build relationships with their brothers and sisters in Christ. It is good to be back to ministry!

- **Lake Aurora sponsored programs:**  
Return of the high school Wonder Retreat in December!  
Continued to stage Men's and Women's Retreats outdoors for the keynote session by request of participants.  
All events 'sold out' in attendance.
- **Rental Groups:** Our year round retreat season saw an increase of 6% for our rental guest groups but seeing a 66% increase in meals served! Retreat groups choosing our food service says alot about our meal quality.
- **75th Ministry Birthday!**: Lake Aurora turned 75 this year! Each month we highlighted history markers and photos in our email newsletter. It was so encouraging to see God's provision and leading in these last 75 years.
- **"Roots Secure- Branching Out" Tent Pegs:** Our current campaign, announced in March 2020, "Roots Secure, Branching Out," is founded on our debt-free position and how we are moving forward. Tent Pegs are an incredible tool that provides an opportunity for many Christians to work together with relatively small gifts and move the ministry beyond today into tomorrow! We are amazed that as of **September 2022, over \$750,000 has been saved** (over \$450K in this last fiscal year) to fund the Oak Hammock, large assembly building, for the entire campus events and special needs indoor programming area.
- **2022 Summer:** "Reset", the theme for our second year in our trilogy. Coming out of the last two years, it was obvious we needed to reset our lives focused on Christ. We saw a 21% increase in camper attendance over last year. We have intentionally reduced capacity by 10% in housing (2 beds) to encourage a more impactful experience between counselors and campers. (Lesson learned from pandemic)
- **Aurora Bucks & Camper Scholarships:** The sliding scale discount provided to any camper who registers through one of the LACC supporter churches—totaled \$83,735 used by 66% of campers. Our church gifts throughout the year cover these discounts to camper families. We encourage churches to use them as outreach to their communities. Since this number is lower than usual, we had more outreach to unchurched campers looking for a summer opportunity. Over and above the Aurora Buck discounts, we provided \$11,518 in scholarships to 50 campers. Impact Polk grant provided by the George W. Jenkins Fund within the GiveWell Community Foundation supplemented our campership funds this summer for 25 campers. 12 campers were fully scholarshipped through the Angel Tree Program of \$3,815.
- **Special Needs Groups:** Our partners, Special Touch Ministry, and Camp JOY ran reduced length programs this year but was excited to see them return. Our inhouse program, Camp Friendship, saw an increase to 18 campers this summer.
- **Facility improvements:** A fully funded Hillside professionally built playground was installed in March with inclusive elements for those of any ability. Special musical elements were also installed to foster creativity. The Women's Retreats raised funds to provide a new filtered water/ice station for the dining hall. An Amazon Wish List was created to make gift in kind donations an easy click of the button. The outdoor Vesper area received a facelift and had a restructure of the layout and installed new benches.
- **"Oak Hammock" Large Assembly Building:** Our next building project is scheduled to begin this next fiscal year debt-free.
- **Staff changes:** Our part-time Food Service Assistant resigned in January and our Guest Relations Assistant resigned in September due to family needs. We still need to replace both positions.
- **Volunteers:** We are blessed by both winter, summer, and year-round volunteers donating 34,008 hours!

Operational Staff & family  
2022 summer



Omega Support Staff  
2022 summer





2021 - 2022

## Executive Team Report

### Challenges of 2022 going into 2023...

- Staffing our year round rental programs with seasonal part-time workers continues to be difficult. Kitchen, office, grounds assistant also needed.
- Replacement housing for our Summer Omega and Alpha leadership teams. The male housing is a double wide mobile home unit from 1986. The female housing is using a Lakeside dorm that needs to be used for camper beds. Ideally, we'd like a "leadership unit" that would have a common meeting space as a part of the design.

### Things to come!

- **A second chapter in our summer trilogy: "Reveal"**. Following a summer where we 'reset' our focus on God's purpose in our life, it is time to 'reveal' God's leading in His Word.
- **Groundbreaking of the Oak Hammock!** With over 75% of the funding in place, we hope to start construction this next fiscal year. We are having more requests for a full campus attendance in our rental groups and our special needs programs are returning so the need for the large assembly space is critical.
- **Phases of Development:** We continually evaluate the needs of our ministry and those we serve to seek the wisest ways to use our land and facilities productively. That also requires careful consideration of how those facilities must be remodeled, modernized, replaced, and expanded. The Sunshine Project gives the order to the developmental needs of this ministry.

- **Phase I:**

**The James and John Cabin & Hillside Steel Tent completed 2014/2015.**

**Midterm Projects** that are facility-minded and based on available funding and labor. We still desperately need a housing units for our summer long staff and retreat staff. This would free up a dorm for camper beds. This list of projects are prioritized by the Board of Trustees.

**"Stirring Waters Adventure Park":** This multi-million dollar project is ongoing and is partnering with "Removing the Barriers Initiative" in securing funding, grants, & design of the structures. Bill Redmon leads the RTBI organization & Steve Bornemann oversees its relationship to Lake Aurora. The aquatic facility will significantly expand our ministry opportunities. It will take pressure off the Lakeside swim area, allow for night swims, and be very intentional to those with special needs and senior adults. We have experienced increased involvement and financial backing of the project from individuals and organizations. The Peacemaker Paddle was an adventure fundraiser that raised over \$136K in September. Phase one is the "Oasis" splash pad and bathhouse. See p 18.

**Large Assembly Building:** The Oak Hammock, will seat approximately 500-600 in a presentation setting. It will be multifunctional and be able to accommodate total campus participants. It is designed and 75% funded at print.

**Sewer service to replace the septic systems on Lakeside:** While not an exciting project, connecting the Lakeside campus to the wastewater treatment plant is a pressing need. This connection is essential before there is a septic failure. The connection will allow for much-needed renovations/upgrades, improved special needs facilities, the addition of restrooms to the Chapel, and campus growth.

- **Phase II:** Completion of the Hillside Cabins. Changing the footprint to combining two cabins with a common meeting space. This will entail building two buildings instead of four. Also, in this phase will be the refurbishing of the Lakeside Chapel to include restrooms and a lakefront porch.
- **Phase III:** The vision continues with structures to provide private motel-type housing and development of the Acacia Walk property with a stand-alone adult retreat center for small groups/leadership teams. These amenities will also help facilitate families using the Stirring Waters facility.

**One of the core values states...** "LACC will act with vision. If our plans are not big enough to require God's blessings to succeed, then they are not big enough." We cannot achieve these goals unless they are God-honoring. This statement is a constant reminder of why Lake Aurora exists: to honor God and introduce people to Him. It is with prayerful consideration that we seek the next steps and trust in God's timing.

We are grateful for the opportunity to partner with churches and individuals to provide a facility, programs, and staff where Christ is proclaimed in central Florida. Thank you for the prayers, involvement, and financial gifts that make this possible.

**Wise men and women  
are always learning, always  
listening for fresh insight.**

Proverbs 18:15



**The Executive Team** includes Steve Bornemann, Chief Financial Officer/Facilities; Phyllis Bornemann, Director of Operations/Marketing; and Jason Mocherman, Summer Programs Director. They lead with Board oversight. As a team, they have 83 combined years of experience in Christian camping and strive to be servant leaders.



*Building relationships that cross culture and backgrounds to exemplify the unity of Christ.*



# Summer Camp Program Statistics

## Summer Of 2022... **RESET**

Program	Date	Registered Campers	Total Workers	Baptism Decisions	Other Decisions
<b>Lakeside Camp</b>					
L123a	6/9-10/2022	55	28	1	
L123b	7/21-22/2022	47	18	0	
L234	7/6-8/2022	66	21	0	
L345	6/5-9/2022	117	26	5	
L456	7/17-21/2022	131	25	6	
L567	6/12-17/2022	127	30	7	1
L678	7/24-29/2022	119	36	5	2
<b>Hillside Camp</b>					
H456a	6/12-16/2022	57	17	7	
H456b	7/24-28/2022	56	18	1	
Camp Friendship	7/6-8/2022	18	11	0	
<b>Campus Wide Camps</b>					
CW678a	6/19-24/2022	185	40	5	1
CW678b	7/10-15/2022	161	39	10	1
CW912	6/26-7/1/2022	204	45	13	5
<b>Life Expedition/Specialty</b>					
SSurvival912	7/10-15/2022	17	4		
Voice in the Wilderness	6/5-9/2022	11	4		
LEBackPack	6/19-24/2022	12	4		
LECanoe6-9	6/26-30/2022	17	6		
LECanoe7-10	7/24-28/2022	19	4		
<b>Leadership Training</b>					
Aquatics	5/31-6/4/2022	7	3		
Big MAC	6/5-10/2022	12	6		
WHOLE	6/3-9/2022	6	4		
Alpha A	6/5-17/2022	12			
Alpha B	6/19-7/1/2022	11			
Alpha C	7/10-15/2022	10			
Alpha D	7/17-29/2022	12			
<b>GRAND TOTAL</b>		<b>1,489</b>	<b>383</b>	<b>60</b>	<b>10</b>

**Capacity has been reduced 10% in housing (2 beds) to encourage a more impactful experience between counselors and campers. (Lesson learned from Pandemic)**

Three additional churches ran summer camp programs as bookends for our season with another 365 participants. **Grand Summer Total: 2,237**





# Summer Camp

## 2002-2022

Year	Campers	Baptisms	Other Decisions
2002	2005	162	68
2003	1986	179	110
2004	1873	146	129
2005	1774	133	119
2006	1828	132	81
2007	1641	127	78
2008	1635	93	57
2009	1587	151	63
2010	1535	99	25
2011	1385	87	58
2012	1406	80	21
2013	1479	92	27
2014	1407 (+113 Harborside)	58	50
2015	1542	63	51
2016	1514	86	21
2017	1597	62	39
2018	1662	82	66
2019	1773	128	29
2020	403 (Pandemic)	32	3
2021	1,229	65	8
2022	1,489	60	10
<b>Total</b>	<b><u>32,863</u></b>	<b><u>2,117</u></b>	<b><u>1,113</u></b>

Out of 32,863 summer campers over a 20 year period, 3,230 of those campers made some type of decision to serve Christ.

10% of the campers from the past twenty years have made a decision to follow Jesus.

### Adult Retreats/Activities

Seek encouragement, renewal, and fellowship at our Men's Retreat, Women's Retreat, Young at Heart Day, Open House, and Golf Scramble.

### Family Retreats/Activities

Building the family and teens with our Mother/Daughter Retreat, Father/Son Retreat, Spring Father/Son Campout, and High School Winter Retreat.

*The camp property was in use 236 days for programming in the 2021/2022 fiscal year.*

7,773 total guests/campers in the 2021-2022 fiscal year. We served over 45,932 meals. We provided service for 16,621 "camper days". (1 night/3 meals = 1 camper day)



# Summer Campers by Churches 2022



Church	2018	2019	2020	2021	2022
Altamonte, Real Life	1	0	0	0	1
Apopka, Journey	14	19	6	19	9
Arcadia, First	1	2	0	0	3
Auburndale Community	18	9	3	2	1
Avon Park, First	1	0	0	0	1
Babson Park, First	0	0	0	0	1
Bartow, Community	11	7	0	2	2
Bonita Springs, Anchor	19	8	0	0	7
Bradenton, Westside	3	0	0	0	0
Brooksville Christian	0	2	2	2	1
Cape Coral, Community 242	1	0	0	0	0
Cape Coral, Crosspoint	16	18	0	2	3
Cape Coral, First	3	4	6	13	29
Chuluota, River Run	8	4	0	0	1
Clearwater, First	4	4	0	7	14
Clermont, Real Life	112	94	12	45	50
Clewiston, Community	1	0	0	3	0
Cocoa, Discovery	0	0	0	0	1
Cocoa, First			1	0	0
Dade City Christian	3	5	4	7	6
Deltona, Cornerstone	14	9	6	18	10
Dunedin, First	6	6	0	0	0
East Orlando, Real Life	9	9	0	0	0
Eustis, Lake Eustis Christian	21	30	10	50	70
Fruitland Park, Northside	3	4	4	6	10
Frostproof, First					2
Ft. Myers, Southside Christian				1	1
Ft. Myers, First	24	40	9	23	36
Ft. Myers, New Day	6	1	0	3	1
Ft. Pierce, Southside	7	8	3	2	2
Groveland, South Lake	24	18	0	23	27
Hunter's Creek, Real Life	5	4	0	0	0
Kissimmee, Kissimmee Christian	34	15	6	20	12
Kissimmee, Northeast	3	8	1	11	12
Kissimmee, Poinciana	6	12	0	12	9
Lady Lake, Fairway Christian	13	14	5	7	9
Lake Mary, Lifepoint	8	8	0	9	6
Lake Wales, Church on the Move	32	44	14	30	36
Lakeland, Legacy	15	17	5	14	7
Largo, Crossroads	10	17	3	16	8
Leesburg, First		1	0	0	1
Lehigh Acres Christian	4	2	1	2	2
Longwood - River Run - North	1	0	0	0	0
Longwood, Real Life		1	0	0	0
Melbourne, Harbor City		2	0	0	1
Melbourne, River Run - Brevard	29	30	8	17	14
Mt. Dora, Real Life	9	13	1	10	15
N Ft. Myers, New Hope	1	0	0	0	0
Naples Christian	1	0	0	0	0
Naples, Capri	6	6	2	5	6
New Port Richey, Lifepoint Christian					1
New Port Richey, Wesley Chapel Christian		1	0	0	0
Nokomis, New Hope					1



# Summer Campers by Churches

## 2022

Church	2018	2019	2020	2021	2022
Odessa, Journey Christian	1	1	0	0	0
Okeechobee Christian	3	1	0	0	1
Okeechobee, His Church	0	2	0	0	0
Orlando, Real Life East		9	0	12	9
Orlando, Real Life SoDo (FCC)	0	13	0	5	11
Orlando, Southside		1	0	0	0
Orlando, Thrive Church	3	0	0	0	0
Orlando, West Orange	1	1	0	0	0
Ormond Beach, Tomoka Christian		20	3	13	18
Palm Bay, Tomoka Christian	15	16	3	11	13
Pompano Beach, First	14	12	0	0	0
Pt Charlotte, Suncoast Christian		1	0	0	0
Pt St Lucie, Christian					1
Pt. Charlotte, New Day	64	69	0	51	56
Punta Gorda, First Christian				1	0
Rockledge, Viera Christian	1	0	0	1	0
Ruskin, First					1
Safety Harbor, Harborside	16	15	2	6	12
Sanford, Safe Harbor	14	14	10	9	5
Sarasota Christian	37	30	9	13	16
Sarasota, Crosspointe	1	3	0	0	0
Sebastian Christian	13	16	11	18	13
Sebring Christian	12	13	4	7	8
Seffner, McIntosh Christian	1	0	0	0	0
Seminole, First	27	22	7	6	7
St. Cloud, Canoe Creek	50	79	41	71	77
St. Petersburg, Central	32	32	3	27	45
Sun City Center, First Christian				1	0
Tamarac, Community	156	160	2	9	7
Tampa, Common Ground	2	6	0	0	0
Tampa, Discovery Christian					1
Tampa, East Christian	6	5	0	1	0
Tampa, New Beginnings	8	6	5	5	1
Tampa, Water's Edge	2	1	1	0	0
Tavares, Adventure	0	4	3	1	0
Titusville, First	5	9	1	0	4
Trinity, Generations	96	78	6	26	19
UCF, Real Life	8	9	0	0	0
Valrico, New Life Christian					2
Vero Beach, Cornerstone	9	15	9	6	31
Vero Beach, Premiere Christian		1	0	0	0
Vero Beach, Vero Christian	8	4	0	0	2
W. Palm Beach Comm. Christian	2	4	2	1	4
Wauchula, First	45	39	2	22	52
Wauchula, Real Life	29	30	10	23	14
Weeki Wachee, Ch in Wildwood	22	31	0	23	29
Winter Garden, New Horizons	6	5	0	18	4
Winter Haven, Christian	3	10	3	14	15
Winter Haven, Multiply (Havendale)	2	3	0	0	0
Winter Park, First	10	9	6	21	15
Winter Springs, The Foundry	36	40	5	9	12
Zephyrhills, Zephyr	6	11	1	1	5

# Summer Campers by Churches 2022



Church	2018	2019	2020	2021	2022
Miscellaneous	378	435	142	416	546
Campers that listed other churches than one of our area supporting/owner churches as their home church					



## TOP 10 CHURCHES FOR 2022 SUMMER CAMP PROGRAM ATTENDANCE



1. Canoe Creek C.C., St Cloud 77
  2. Lake Eustis Christian 70
  3. New Day Christian, Pt Charlotte 56
  4. First Christian, Wauchula 52
  5. Real Life Christian, Clermont 50
  6. Central C.C., St Pete 45
  7. First Christian, Ft Myers 36
  8. Christ's Church on the Move, LW 36
  9. Cornerstone Christian, Vero Beach 31
  10. First Christian, Cape Coral 29
- Christian Church in the Wildwood 29

**Summer Camp Mission has grown...**

**1947...**

**2 weeks of camp and 2 programs & 20 acres**

**to**

**2022...**

**9 weeks and 25 programs & 80 acres**



*History collage from the 1947*

# Church Giving\*

10/1/2021 thru 9/30/2022



*Our Winter volunteers are like family and provide more than 3,600 hours of service..*

"God loves it when the giver delights in the giving"  
(2 Corinthians 9:7 The Message)

Our purpose is to be an extension of the Christian church dedicated to providing meaningful programs in a beautiful outdoor setting. It is a place where youth, adults, and families take time to enrich their personal relationship with Christ, fellowship with each other, and prepare for service while discovering God's will for their lives.

<b>Corp Mem.</b>	<b>Church</b>	<b>City</b>	<b>Total Giving</b>
	Fairway Christian Church	The Villages	\$27,290
Yes	Legacy Christian Church	Lakeland	15,000
Yes	Christ's Church on the Move	Lake Wales	14,613
Yes	New Beginnings Christian Church	Tampa	14,472
Yes	New Day Christian Church	Port Charlotte	12,000
Yes	Kissimmee Christian Church	Kissimmee	10,105
Yes	Lake Eustis Christian Church	Eustis	10,047
Yes	First Christian Church-Cape Coral	Cape Coral	6,500
Yes	Canoe Creek Christian Church	Saint Cloud	6,000
Yes	First Christian Church-Babson Park	Babson Park	5,575
Yes	Vero Christian Church	Vero Beach	5,000
	Georgianna United Methodist Church	Merritt Island	5,000
Yes	Christian Church in the Wildwood	Spring Hill	5,000
Yes	First Christian Church-Clearwater	Clearwater	4,850
	South Lake Christian Church	Groveland	4,800
Yes	First Christian Church-Titusville	Titusville	4,200
Yes	Anchor Christian Church	Bonita Springs	4,101
Yes	First Christian Church-Frostproof	Frostproof	3,925
Yes	Sarasota Christian Church	Sarasota	3,900
Yes	Central Christian Church	Saint Petersburg	3,881
Yes	First Christian Church-Seminole	Seminole	3,625
Yes	Lakeport Church of Christ	Moore Haven	3,600
Yes	New Day Christian Church-Fort Myers	Fort Myers	3,600
Yes	Sebastian Christian Church	Sebastian	3,600
Yes	Poinciana Christian Church	Kissimmee	3,583
Yes	Winter Haven Christian Church	Winter Haven	3,342
Yes	First Christian Church-Wauchula	Wauchula	3,334
	First Christian Church - Ruskin	Ruskin	3,158
Yes	Journey Christian Church	Apopka	3,150
Yes	West Orange Christian Church	Orlando	3,039
Yes	Crossroads Christian Church-Largo	Largo	3,000
Yes	Real Life Christian Church-Clermont	Clermont	3,000
Yes	East Tampa Christian Church	Tampa	2,940



# Church Giving\*

10/1/2021 thru 9/30/2022

*The double zipline passing the Blue Heron Shelter and Zebeedee's Snack Shack.*

<b>Corp Mem.</b>	<b>Church</b>	<b>City</b>	<b>Total Giving</b>
	Cornerstone Christian Community Church	Deltona	\$ 2,710
Yes	First Christian Church-Bradenton	Bradenton	2,600
Yes	Capri Christian Church	Naples	2,500
	Community Christian Church Ft Lauderdale	Tamarac	2,500
Yes	Southside Christian Church-Sarasota	Sarasota	2,434
	Fellowship of the Hills	Blairsville, GA	2,400
Yes	First Christian Church-Winter Park	Winter Park	2,400
	First Christian Church of Margate	Margate	2,375
Yes	Sebring Christian Church	Sebring	2,250
Yes	Zephyr Christian Church	Zephyrhills	2,069
Yes	Crosspoint Christian Church-Cape Coral	Cape Coral	2,000
Yes	Cornerstone Christian Church-Vero Beach	Vero Beach	1,800
Yes	New Life Christian Church	Spring Hill	1,800
	Eastside Christian Church	Lake Placid	1,768
Yes	First Christian Church-Fort Myers	Fort Myers	1,500
	Westport Christian Church	Port St Lucie	1,324
	North Citrus Christian Church	Citrus Springs	1,300
Yes	Dade City Christian Church	Dade City	1,200
Yes	Murdock Christian Church	Port Charlotte	1,200
Yes	Southside Christian Church-Fort Pierce	Fort Pierce	1,125
	Towerwood Community Chapel	Lake Wales	1,100
Yes	Northeast Christian Church-Kissimmee	Kissimmee	1,040
	Northside Christian Church-Fruitland Park	Fruitland Park	1,040
Yes	His Church - It's Jesus' Church	Okeechobee	1,025
Yes	First Christian Church-Homosassa	Homosassa Springs	612
	Adventure Christian Church	Tavares	600
	Okeechobee Christian Church	Okeechobee	275
	Port Saint Lucie Christian Church	Port Saint Lucie	200
Yes	New Beginnings Christian Church	Lakeland	75
	New Hope Christian Church-Nokomis	Nokomis	74
	Southside Church	Peachtree City, GA	50
Total Church Giving			<u>\$ 254,574</u>

28 Corp Member Churches not listed out of 75



\*Does not include individual or class giving

# Partnership...

## What it means to be a Supporting, Sending, and Serving Church.

### Owner Church Agreement

**Membership** into the corporation of Lake Aurora Christian Assembly, Inc. (dba Lake Aurora Christian Camp & Retreat Center) is defined as an independent Christian Church that has been approved by the Board of Trustees and is in good standing with the Christian Church/Church of Christ fellowship in the central Florida region.

Churches in the membership of Lake Aurora Christian Assembly, Inc. have the following privileges:

1. Entitled to appoint two representatives of the congregation to vote in the annual meeting that elects the Board of Trustees and/or any approval of capital transactions of Real Property.
2. Members of owner churches are eligible for election to the Board of Trustees.
3. Receive "Aurora Buck" discounts for summer camp for unlimited use and outreach.
4. Participation in a quality Christ-centered camping program for all ages in a safe environment with trained dedicated Christian men and women.

The Board of Trustees desires to encourage churches to develop its membership involvement to one of **partnership**.

The characteristics and components of a **Partnership** are threefold:

- A **Supporting** church agrees to financially support the programs and operation of Lake Aurora Christian Camp.
- A **Sending** church promotes Lake Aurora's summer camp program, as well as its year round educational opportunities for all ages. It provides updates and needs of the camp to the congregation as a whole by appointing a Lake Aurora Ambassador to be its promotional liaison.
- A **Serving** church provides volunteers to assist with summer camp programs, work project volunteers, or other facility/program related volunteers.

The **goal** is to have our member churches be **active** in **all three components**.

In return these **Partnership** churches receive the additional benefits of:

1. *Discounted rates* when holding retreats on the property.
2. *No charge for day use* (church picnics) on the camp property (subject to availability).
3. *Discounted rates* for Leadership Development elements (Challenge Course & Paintball)
4. *Complimentary personal retreats* for church staff (subject to availability).

# Did You Know?

God's impact and provision in 2021-2022



**60**

Public Baptism decisions in the eight weeks of summer camp.

**34,008**

hours were graciously given by over 400 volunteers from program to facilities.



**45,932**

meals served

**Partner & Educational Arm of the church**

**37**

Lake Aurora programmed Retreats/ Camps are offered to the churches to strengthen every age group in the church family.



# Donors

Other contributions including  
Tent Pegs, Aurora Lights, Groups,  
& any 'non church' gifts

10/1/2021 thru 9/30/2022



The restful environment of the waterfront at sunrise

## \$10,000 & up

Axley Family Giving Fund  
Natalie's Orchid Island Juice Co.  
M/M Joshua Fell  
Miles Judah  
Thomas Pate  
M/M Daniel Prater  
John & Noel Wood

## \$5,000 - \$9,999

M/M H. Michael Adams  
M/M Stephen Bornemann  
M/M Eldridge Bradley  
Givewell Community Foundation  
Coni Hebert  
Martha Heine  
M/M Michael Jansma  
Clara Kellar  
Lake Wales Breakfast Rotary Club  
Joseph Lewis

## \$2,000 - \$4,999

Carolyn Conner  
Joy Dance  
M/M Lee Folsom  
Deborah Graves  
Curtis Hagens  
Janet Harman  
Tamara Johnson  
David & Jean Littiken  
M/M David Miller  
M/M Josh Mocherman  
M/M Hubert Morrow  
David Rhodes  
M/M Lee Robison  
Kevin Seifert  
Ronald Tungate  
M/M Gerald Wilgus

## \$1,000 - \$1,999

Roy Bornemann  
Christian Messengers Class

Largo, FL  
Fort Pierce, FL  
Lake Wales, FL  
Wauchula, FL  
Lakeland, FL  
St Cloud, FL  
Largo, FL

Ft Myers, FL  
Lake Wales, FL  
Clearwater, FL  
Richmond Hill GA  
Orlando, FL  
Clearwater, FL  
Kissimmee, FL  
Lake Wales, FL  
Holiday, FL

N. Ft Myers, FL  
Decatur, GA  
Eustis, FL  
Bradenton, FL  
Sarasota, FL  
Clermont, FL  
S. Pasadena, FL  
Groveland, FL  
Acworth, GA  
Sarasota, FL  
Lake Wales, FL  
Arcadia, FL  
Sarasota, FL  
Austell, GA  
Lakeland, FL  
Vero Beach, FL

Fairfield, OH  
Fort Myers, FL

## \$1,000 - \$1,999 continued

M/M Mark Clark  
M/M Kerry Eastridge  
M/M Rob Freedman  
Dale Girardin  
Katelyn Koschewa  
M/M John Martinelli  
Fredric Moore  
Adam Peggs  
M/M William Redmon  
M/M Saul Reyes  
M/M R. L. Roller  
Eloise Sarlo  
Betsy Schnarre  
M/M Logan Smith  
Brad Weaver  
Mary Wyatt

## \$500 - \$999

Nathaniel Abernathy  
James Brooks  
Encouragers Class  
Barbara Harris  
Becky Hogan  
Lois Huguley  
Cherisa Jerez  
M/M Isaac Leonard  
M/M Jim Massing  
David McGrew  
Henry Melton  
M/M Jason Mocherman  
Eloise Pitts  
Joe & Cindy Poster  
TJ & Emmalee Raigoza  
Linda Roberts  
Carrie Roe  
M/M Joseph Skiera  
Charles Thaggard  
Pamela Turner  
Robert Vigna  
Volunteers Class  
Steve Watson  
Michael Whitney  
Dr. & Mrs. Darin Wolfe

Greenfield, IN  
Fort Myers, FL  
Clearwater, FL  
Homosassa, FL  
Washington, DC  
Vero Beach, FL  
Avon Park, FL  
Sarasota, FL  
Lake Wales, FL  
Ocala, FL  
Burnettsville, IN  
Fort Myers, FL  
Lake Wales, FL  
Stillwater, OK  
Cape Coral, FL  
Orlando, FL

Longwood, FL  
Avon Park, FL  
Eustis, FL  
Fort Myers, FL  
Orlando, FL  
Port Charlotte, FL  
Saint Cloud, FL  
Sykesville, MD  
Sarasota, FL  
Spring Hill, FL  
Wrightsville, GA  
Sarasota, FL  
Clermont, FL  
Lake Wales, FL  
Lake Wales, FL  
Sebastian, FL  
Pt St Lucie, FL  
Bear Lake, MI  
Fort Myers, FL  
Lake Wales, FL  
Punta Gorda, FL  
Titusville, FL  
Orange Park, FL  
Vero Beach, FL  
Maitland, FL







*Nesting eagle at the Meadows camping area on the south end of the campus*

# Donors

Other contributions including  
Tent Pegs, Aurora Lights, Groups,  
& any 'non church' gifts

10/1/2021 thru 9/30/2022

## \$50 - \$499

Donna Adams  
John & Donna Ardito  
Rick & Kimberly Atkinson  
Scott Barsness  
Jolee & BJ Beamer  
Theodora Beaver  
William Behrman  
Linda Bishop  
Cindy Black  
M/M Lanny Boden  
David Booker  
M/M Mark Bornemann  
M/M Scott Bornemann  
Carole Bowen  
Betty Boyd  
Louise Carden  
Cynthia Caulkins  
Donald Charon  
Richard Chestnut  
Sharlene Clark  
Joanne Clingman  
Warren Corbin  
Nina Cruz  
Terri Curtis  
Sherry Czerwonky  
Bruce Debord  
Vivian Dervan  
Nancy Downey  
Faye Drew  
Norman Ducharme  
Marsha Elliott  
Tina Fincannon  
Libby Foster  
Marianne Galloway  
Robin Garcia  
Walter Gower  
Carolynn Grammas  
Elizabeth Grantham  
M/M Ken Groff  
Edward Haines  
Jeff & Celia Harper  
Cheryl Harris  
Juanita Hartley

Temple Terrace, FL  
Eustis, FL  
Tampa, FL  
Lake Wales, FL  
Lake Wales, FL  
The Villages, FL  
Gainesville, FL  
Babson Park, FL  
Miami, FL  
Orlando, FL  
Tampa, FL  
Blanchester, OH  
Fairfield, OH  
Cape Coral, FL  
Lakeland, FL  
Lake Wales, FL  
Ruskin, FL  
Nalcrest, FL  
Oldsmar, FL  
Clearwater, FL  
Orlando, FL  
Sunrise, FL  
Clearwater, FL  
Cape Coral, FL  
The Villages, FL  
Saint Cloud, FL  
Ocoee, FL  
Fort Myers, FL  
Lakeland, FL  
Sebring, FL  
Clearwater, FL  
Port St Lucie, FL  
Sarasota, FL  
Clearwater, FL  
Tampa, FL  
Lake Wale, FL  
Annapolis, MD  
Palmetto, FL  
Lakeland, FL  
Pt St Lucie, FL  
Findlay, OH  
Fort Myers, FL  
Sebring, FL

## \$50-\$499 continued

M/M Glen Haun  
M.J. Hayes  
Cw Hemingway  
Lamar Hinson  
M/M Tracy Hoeft  
M/M Harold Hoeft  
LeighAngela Holbrook  
Jj Honish  
Scott Howard  
Betsy Hudson  
Mark Hughs  
Mark Hulbert  
Jim Hull  
M/M Denes Husty III  
Beverly Jacobs  
Michael Jaffee  
Cameron Johnson  
Linda Kebler  
Roger Kelley  
Cynthia Kenworthy  
Patricia Kessler  
Rural King  
Cary Kirkham  
Lakeshore Men's Club  
M/M Al Lay  
William Lemmel  
M/M Curt Leonard  
M/M James Love  
M/M Christopher Marsden  
Kimberly Marten  
Jenna Matheny  
M/M Richard McCoy  
M/M Jim McGimpsey  
Jennifer McGimpsey  
Lynn Miller  
Todd Miller  
Joseph Mongerard  
Jimmie Moore  
Callie Moore  
Wesley Norton  
Dale Owens  
Lee Paver  
Nancy Pettit

Seffner, FL  
CranberryTwp, PA  
Dade City, FL  
Winter GardenFL  
Clearwater, FL  
Tampa, FL  
Moscow, TN  
Sarasota, FL  
Georgetown TwpMI  
Melbourne, FL  
Lake Mary, FL  
Lakeland, FL  
Hudsonville, MI  
Fort Myers, FL  
Perrysburg, OH  
Hollywood, FL  
Dawsonville, GA  
Bradenton, FL  
Georgetown Twp,MI  
Pt Charlotte, FL  
Sarasota, FL  
Lake Wales, FL  
La Porte, IN  
Lakeshore, FL  
Cambridge City, IN  
Clearwater, FL  
Sarasota, FL  
Benzonia, MI  
Orlando, FL  
Winter Park, FL  
Melbourne, FL  
Lake Wales, FL  
Eldridge, IA  
Omaha, NE  
Lake Wales, FL  
Wauchula, FL  
Fort Myers, FL  
Broken Arrow, OK  
Lake Wales, FL  
Fort Pierce, FL  
Orlando, FL  
Vero Beach, FL  
Bradenton, FL



# Donors

Other contributions including  
Tent Pegs, Aurora Lights, Groups,  
& any 'non church' gifts

10/1/2021 thru 9/30/2022



The Big Oak off the front porch of the dining hall.

## \$50-\$499 continued

Karen Pickles  
Hannah Platz  
Sallie Posey  
M/M Jim Powers  
Virginia Price  
Removing the Barriers Inc  
Ann Richards  
Gordon Romeis  
Craig Rudolph  
Sarah Ruggieri  
The Sanders Agency  
M/M Kader Scull  
M/M Mark Shaneyfelt  
M/M Martin Shirley  
M/M David Smith  
Dan Smith  
Daniel Smith  
Elizabeth Stelzer  
M/M Mike Stephens  
Angie Steve  
Don Stinnett  
Paul Taylor  
Janet Tetreault  
C. Bryan Thaggard  
Leslie Thaggard  
Ronald Tortora  
Steve Trinkle  
Gretchen Tripp  
Tabitha Tuccillo  
Mary VanHooreweghe  
Carol Walters-Palmer  
Henry Wattjes  
Herman Wattwood  
Norman Weener  
Kathy Winstead  
M/M Harold Wolfe  
M/M Bryan Wooley  
Janet Worling  
Ronald Wright

Lake Wales, FL  
Fort Myers, FL  
Fort Pierce, FL  
Lakeland, FL  
Melbourne, FL  
Lake Wales, FL  
Lake Wales, FL  
Fort Myers, FL  
Safety Harbor, FL  
Spring Hill, FL  
Mishawaka, IN  
Key West, FL  
Portland, IN  
Palmetto, FL  
Fort Pierce, FL  
Bradenton, FL  
Bradenton FL  
Midland, MI  
Fort Myers, FL  
Rapid City, SD  
Lakeland, FL  
Cape Coral, FL  
Ruskin, FL  
Fort Myers, FL  
Fort Myers, FL  
Fort Myers, FL  
Vero Beach, FL  
Fort Myers, FL  
Vero Beach, FL  
Sebring, FL  
Palm Coast, FL  
Fort Myers, FL  
Titusville, FL  
Zeeland, MI  
Warner RobinsGA  
Fort Myers, FL  
Wildwood, FL  
Goldsboro, NC  
Fort Myers, FL



History collage from the 1960's



History collage from the 1970's





Lakeside drive and playground at sunset.

# Tent Peg

Small but mighty tool to fund future ministry



A Stronghold for the ministry

Preserving the Past...

## Tent Pegs

...Securing the Future

# "Roots Secure - Branching Out"

Tent Pegs preserve the past but they also secure the future!

Currently over \$750,000 saved!  
Goal: Build "Oak Hammock" debt free!

### Here's how to help..

Any amount counts, as Tent Pegs are driven one hammer blow at a time. However, here are some suggestions:

\$25 per month for three or more years

Tent Peg Units can be the combination of several hammer blows to equal:

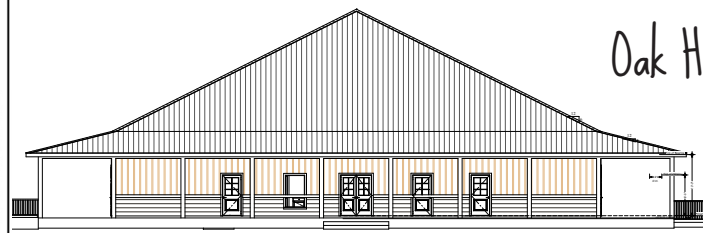
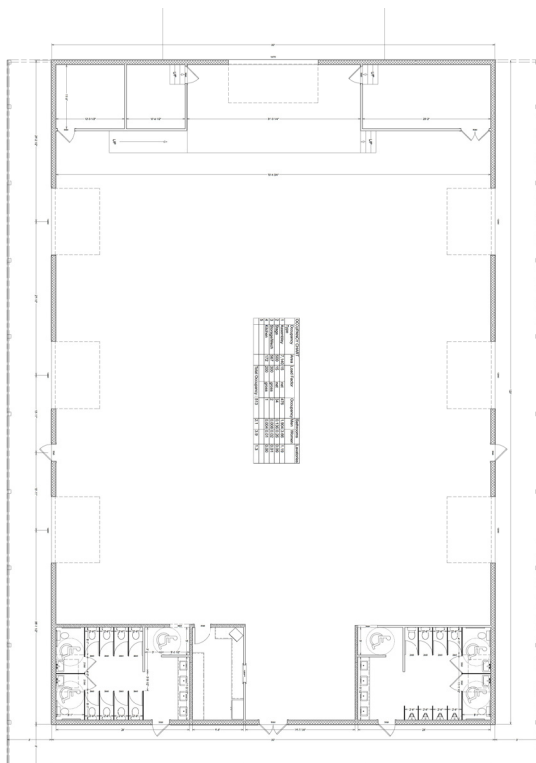
- 1 Tent Peg unit = \$25/month
- 2 Tent Peg units = \$50/month
- 4 Tent Peg units = \$100/month



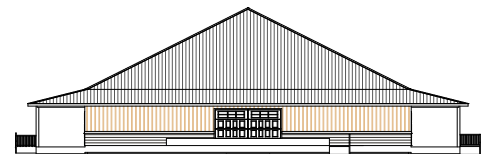
God blesses our efforts when we work together for His glory!



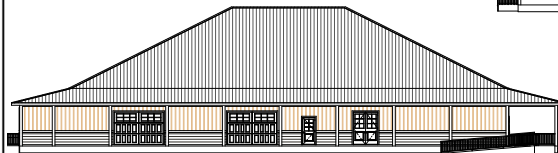
Sign up online at [lakeaurora.org/donate](http://lakeaurora.org/donate) & drive your tent peg a month at a time or *all at once!*



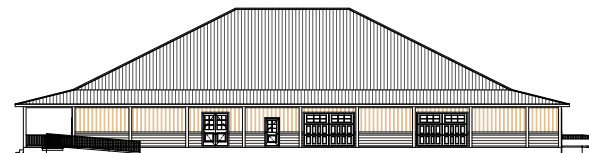
FRONT ELEVATION  
SCALE: 1/8" = 1'-0"



REAR ELEVATION  
SCALE: 1/8" = 1'-0"



LEFT ELEVATION  
SCALE: 1/8" = 1'-0"



RIGHT ELEVATION  
SCALE: 1/8" = 1'-0"



## Oak Hammock Plans



# StirringWaters

at Lake Aurora Christian Camp  
*StirringWaters.World*

## Today – Tomorrow – Forever

Consider these photos of faith in action. Photo 1 is when the King’s Trail Christian Church purchased a special beach wheelchair and then gave Barney Moore his first ever swim in a lake at Lake Aurora. Photo 2 is a few years later when Christ Church on the Move used the same chair to give Barney his second experience in Lake Aurora to baptize him.

*Working together we can share Christ with every family in Florida who is living with disabilities. That reaches nearly 1 of every 3 Floridians.*



**Today**, through Removing the Barriers Initiative, we are meeting the real needs of people and families living with disabilities across the State of Florida. **Tomorrow** we will have **StirringWaters** and minister to families living with disabilities from around the globe. And, with God’s people working together it will be here **Forever** as His people set aside funds in trust to keep it living and working.

Taking the GOOD NEWS to the whole world –

To the WORLD of people living with disabilities.



Raised over \$136,698  
as of Oct 3, 2022

Held September 17-21, 2022

This was an adventure fundraising experience with 16 individuals who believed in the mission to remove barriers for those of any ability. Funds raised were for the StirringWaters project on the Lake Aurora campus.



Servant Leaders growing in the Alpha program.

# Statement of Activities & Financial Position

For the fiscal years ending  
September 30, 2022 & 2021



## Statement of Activities and Changes in Net Assets

	<u>Year Ending September 30, 2022</u>			<u>Year Ending September 30, 2021</u>		
	Unrestricted	Temporarily Restricted	Total	Unrestricted	Temporarily Restricted	Total
<b>Public Support and Revenue</b>						
Retreat Hosting	477,584		477,584	282,723		282,723
Contributions	342,399	253,999	596,398	427,500	128,185	555,685
Summer Camp	401,658		401,658	293,270		293,270
Lake Aurora programs	79,836		79,836	58,382		58,382
Rental Income	4,450		4,450	5,467		5,467
Concessions (less expenses of \$36,158)	15,389		15,389	15,815		15,815
Fruit Sales	19,474		19,474	26,184		26,184
Other Income	143,774		143,774	237,163		237,163
<b>Total Operating Income</b>	<b>1,484,563</b>	<b>253,999</b>	<b>1,738,562</b>	<b>1,346,504</b>	<b>128,185</b>	<b>1,474,689</b>
<b>Operating Costs &amp; Expenses</b>						
<b>Program services:</b>						
Food Service	321,349		321,349	251,616		251,616
Programming/Guest Relations	397,640		397,640	331,536		331,536
Accommodations	321,915		321,915	301,633		301,633
<b>Support services:</b>						
Management and general	203,574	3,148	206,721	204,647		204,647
Fund-Raising	9,813		9,813	9,245		9,245
<b>Total Operating Costs &amp; Expenses</b>	<b>1,254,291</b>	<b>3,148</b>	<b>1,257,438</b>	<b>1,098,676</b>	<b>-</b>	<b>1,098,676</b>
<b>Excess (deficit) of public support and revenue over expenses</b>	<b>230,272</b>	<b>250,851</b>	<b>481,124</b>	<b>247,828</b>	<b>128,185</b>	<b>376,013</b>
<b>Net Assets Released from Restrictions</b>						
Program services	15,583	(15,583)	-	9,457	(9,457)	-
Capital Projects	44,584	(44,584)	-	32,944	(32,944)	-
Debt payment			-			-
<b>Changes in Net Assets</b>	<b>290,439</b>	<b>190,684</b>	<b>481,124</b>	<b>290,229</b>	<b>85,784</b>	<b>376,013</b>
<b>Net Assets, Beginning of Year</b>	<b>2,518,331</b>	<b>331,974</b>	<b>2,850,305</b>	<b>2,228,102</b>	<b>246,190</b>	<b>2,474,292</b>
<b>Net Assets, End of Year</b>	<b>2,808,770</b>	<b>522,658</b>	<b>3,331,429</b>	<b>2,518,331</b>	<b>331,974</b>	<b>2,850,305</b>



Enhancing Trust

www.ecfa.org

Accredited by the E.C.F.A.

Our acceptance into the Evangelical Council for Financial Accountability is an assurance to friends and donors that we operate with sound business and accounting practices with strong ethical principles. We faithfully demonstrate compliance with established standards for financial accountability, fund-raising and board governance. It is a declaration that we are a worthy recipient of donor's financial trust.



Platinum  
Transparency  
2022

Candid.

# Statement of Activities & Financial Position

For the fiscal years ending  
September 30, 2022 & 2021



Small group Bible Class in the Lakeside Chapel

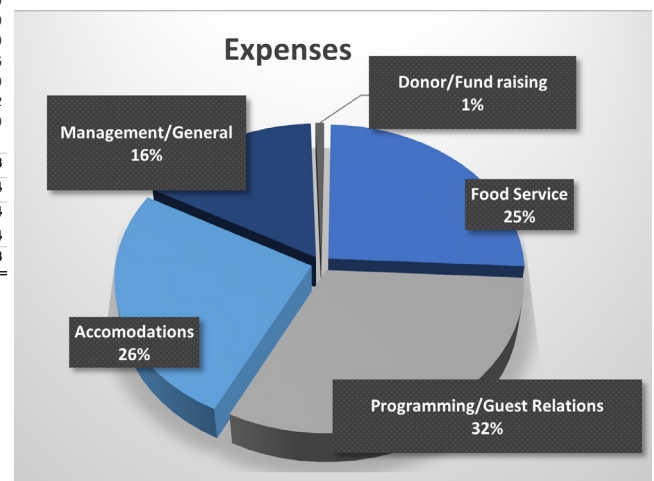
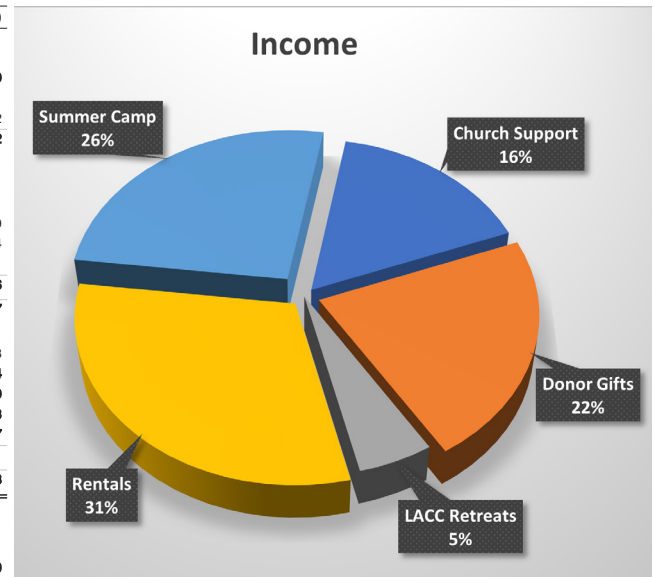


## Statement of Functional Expenses

<u>Operating &amp; Support Expenses</u>	<u>Food Service</u>	<u>Programming</u> <u>Guest Rel.</u>	<u>Accom-</u> <u>modations</u>	<u>Management</u>	<u>Fund Raising</u>	<u>Total</u>
Salaries and benefits	58,208	194,335	174,355	80,749	6,224	513,872
Food Service	168,784					168,784
Depreciation & amortization	37,200	29,756	69,385	26,063		162,404
Facilities & related	51,963	27,680	66,423	51,673	717	198,456
Insurance	5,113	26,724	0	2,069		33,906
Office & related	81	43,430	11,751	43,019	2,872	101,154
Programming		75,715				75,715
Designated Funds used				3,148		3,148
<b>Total Operating Costs &amp; Expenses</b>	<b>321,349</b>	<b>397,640</b>	<b>321,915</b>	<b>206,721</b>	<b>9,813</b>	<b>1,257,438</b>

## Statement of Financial Position -- Fiscal year ending September 30, 2022 & 2021

	TOTAL	
	AS OF SEP 30, 2022	AS OF SEP 30, 2021 (PY)
<b>ASSETS</b>		
Current Assets		
Bank Accounts	\$1,045,705.78	\$498,045.19
Accounts Receivable		
1210 Accounts Receivable (A/R)	31,700.66	22,059.42
<b>Total Accounts Receivable</b>	<b>\$31,700.66</b>	<b>\$22,059.42</b>
Other Current Assets		
1200 Accounts Receivable - Misc	740.72	514.61
1230 Prepaid Worker's Compensation	3,336.71	3,902.51
1240 Prepaid Commercial Insurance	11,487.58	10,246.89
1260 Inventory - Food Service	5,153.65	5,231.74
1270 Inventory - Concessions	16,157.58	17,566.31
<b>Total Other Current Assets</b>	<b>\$36,876.24</b>	<b>\$37,462.06</b>
<b>Total Current Assets</b>	<b>\$1,114,282.68</b>	<b>\$557,566.67</b>
Fixed Assets		
1330 Construction in Progress	0.00	1,130.08
1400 Land	1,237,358.54	1,237,358.54
1500 Buildings	951,900.08	1,021,497.19
1700 Vehicles & Shop Equipment	72,888.53	81,118.23
Office & Programming Equipment	50,047.10	21,456.57
<b>Total Fixed Assets</b>	<b>\$2,312,194.25</b>	<b>\$2,362,560.61</b>
<b>TOTAL ASSETS</b>	<b>\$3,426,476.93</b>	<b>\$2,920,127.28</b>
<b>LIABILITIES AND EQUITY</b>		
Liabilities		
Current Liabilities		
Accounts Payable	\$14,185.22	\$4,249.40
Credit Cards	\$3,435.19	\$6,337.86
Other Current Liabilities		
2030 Summer Camp Mission payable	555.00	0.00
2040 Deposit on Facilities	38,609.00	18,746.50
2060 Accrued Payroll	0.00	11,245.30
2070 Payroll Tax Payable	0.00	11,803.35
2110 403(b) payable	786.38	0.00
2115 Aflac payable	48.72	61.92
2120 Copier lease	34,127.50	6,991.00
2300 Reserve Gift Annuities	4,358.51	11,444.11
<b>Total Other Current Liabilities</b>	<b>\$78,485.11</b>	<b>\$60,292.18</b>
<b>Total Current Liabilities</b>	<b>\$96,105.52</b>	<b>\$70,879.44</b>
<b>Total Liabilities</b>	<b>\$96,105.52</b>	<b>\$70,879.44</b>
Equity	\$3,330,371.41	\$2,849,247.84
<b>TOTAL LIABILITIES AND EQUITY</b>	<b>\$3,426,476.93</b>	<b>\$2,920,127.28</b>



Platinum  
Transparency  
2022  
**Candid.**

Accrual Basis Wednesday, October 26, 2022 01:00 PM GMT-04:00

1/1

Audited financial statements will  
be available January 2023





Omega 2022 team who supported logistics of the summer programs.

# Designated Funds

For the fiscal year ending  
September 30, 2022

## Designated Funds September 30, 2022

<u>Restricted Funds</u>	<u>10/01/21 Balance</u>	<u>Received</u>	<u>Disbursed</u>	<u>Adj</u>	<u>09/30/22 Balance</u>
Bornemann	2,067	1,040	118		2,989
Bricks	2,856	200	270		2,786
Camp Scholarships	5,128	15,643	11,523		9,248
Chapel Porch	2,095				2,095
Cabins	16,091				16,091
The Hammock	153,935				153,935
Miscellaneous	25,468	24,055	46,440		3,083
Stirring Waters	57,908	41,500	1,061		98,347
Tent Pegs	50,107	164,171			214,278
Legacy Lamp Post	1,455	750	-		2,205
WWTP connection	3,750				3,750
Women's Retreat Offering	4,695	6,640	755		10,580
<b>Temporary Restricted Assets</b>	<b>325,555</b>	<b>253,999</b>	<b>60,166</b>	<b>-</b>	<b>519,387</b>
Gift Annuity Reserve	6,419				6,419
<b>Total Temporary Restricted</b>	<b>331,974</b>	<b>253,999</b>	<b>60,166</b>	<b>-</b>	<b>525,806</b>

### Net Assets released

Program restrictions	15,583
Capital Projects	44,584
Debt Payment Restrictions	-
Annuity retirement	-
	<u>60,167</u>



History collage from the 1980's



History collage from the 1990's



# Hillside Cabin Donors

Initial start thru 9/30/2022



Hillside campus cabins with new lamp posts

## Seven of the 11 Cabins built since 2002...

**Philip** - Polk & Highlands Co  
**Simon** - Osceola, Orange, Seminole Co  
**Thomas** - Northside Christian Church

**Andrew** - Hillsborough Co  
**Bartholomew** - Lee & Collier Co  
**James/John** - Indian River Co, Manatee, Sarasota, Desoto, Hardee, Charlotte Co.

James and John built as one structure

**Yet to be built. Current designated funding - \$16,091**  
**Matthew** - Sponsors: Citrus, Hernando, Sumter, Pasco, Lake County churches  
**Peter** - Individual sponsors  
**Thaddeus**  
**James, the Younger**



Since completing the latest cabins, James and John, as a combined structure, we have decided to build the final four as only two separate buildings. It will reduce the structure's footprint on the Hillside campus but, more importantly, provide more efficient userspace. Adding a little more space to the floor plan will provide a common meeting area between the two housing spaces under one roof. Small retreat groups and summer camp will gain an additional indoor meeting space for inclement weather.



## Legacy Lamp Posts

A landscape project that lends itself to honoring legacy and allowing people to use it as a memorial/honoring piece.

A beautiful way to provide lighting around various areas of camp, especially coming out of the dining hall and the circle drive area for all guests including those with limited abilities.

*Additional Lamp Posts will be placed on the path leading to the Lakeside campus and around the completed Hillside campus at a future date.*

All existing lamp posts are named. We have three identified for the next installation and room for nine more.



**Sponsor \$800** For more information on how to purchase a sponsorship contact the camp office or website.





*Enjoying the waterfront in the summer.*

# Lake Aurora...

A ministry for you & your family

Exciting events for adults and families to enjoy during 2022 & Spring 2023

- 1) ♦ Mother/Daughter Retreat  
October 7-8
- 2) ♦ Father/Son Retreat & Camp Out Extension  
November 18-19/19-20
- 3) ♦ “WONDER” High School Retreat -  
December 2-4, 2022
- 4) ♦ Bob Miller Memorial Golf Classic ~ Lake Wales  
February 11
- 5) ♦ Men's Retreat - Keynote: Jim Book, Steve Brooks,  
March 3-4 Tim Gray
- 6) ♦ Young at Heart Day - David Wheeler, TN  
March 9
- 7) ♦ Father/Son Reconnect  
TBD
- 8) ♦ Women's Retreats - April 21-22 April 22-23  
Keynote: Wendy Fitzgerald/Rebecca Leeman
- 9) ♦ Open House for Summer Camp  
May 21
- 10) ♦ Camp Friendship - Summer Edition  
July 5-7, 2023
- 11) ♦ Create your own Service/Mission Project  
Contact us to schedule a “WorkDay” for your church or  
small group.



For more information, please visit our website at [www.lakeaurora.org](http://www.lakeaurora.org) or email to [info@lakeaurora.org](mailto:info@lakeaurora.org)

*22 acres of the campus is still a working grove providing extra revenue, aroma, barrier, and nostalgia.*





# Summer Camp 2023

Four tracks of life changing summer programs

\*Preceding letters (L & H) indicate campus. CW means "campus wide" using the both Hillside and Lakeside  
 Numbers indicate grade entering in the fall of 2023

Resident camps available on two campuses (Hillside/Lakeside) at Lake Aurora plus off site primitive resident camps.

## Lakeside Campus ~

Camper capacity 126-140 per program

Campus/Grade

L123a	June 8-9
L123b	July 20-21
L234	July 5-7
L456	July 16-20
L567	June 11-16
CW678a	June 25-30
Combined with Hillside Campus	
L678a	July 9-14
L678	July 23-28
CW9-12	June 18-23
Combined with Hillside Campus	

## Hillside Campus ~

Camper capacity 45-56 per program

Campus/Grade

H345	July 9-13
H456a	June 11-15
H456b	July 23-27

## Specialty Camps

Volleyball Camp	
Girls Only	July 16-20
Camp Friendship	
Special Needs	July 5-7

## Life Expeditions\* ~

A variety of primitive wilderness experiences from the scrub woods and rivers of central Florida to the mountains of North Georgia.

*\*Dates/Programs are tentative and are subject to change.*

### Voice in the Wilderness

4-6 Grade June 4-8

### Peace River trip

Canoe Camp 6-9 Grades June 25-29

Canoe Camp 7-10 Grades July 23-27

### Backpack Appalachian Trail

9-12 Grades June 18-23

### Spiritual Survival Camp

9-12 Grades July 9-14

## Leadership Training ~

One to two week programs for those campers seeking to be a true servant-leader for Christ.

**Big M.A.C. - Maturing As Christians.....**June 4-9 Grades 8 & 9

**WHOLE -Wilderness Hands On Leadership Experience....** June 2-9 Grades 10-12

**Aquatics Leaders - Leadership & Red Cross Lifeguard Training (15 yrs & older)** May 30 - June 2

**Alpha Program - Grades 9-12** Interning in support positions for summer camp in two week sessions.

**A - Session:** June 4-16

**B - Session:** June 18-30

**C - Session:** July 5-14

**D - Session:** July 16-28

[www.lakeaurora.org](http://www.lakeaurora.org)



[info@lakeaurora.org](mailto:info@lakeaurora.org)



*History collage from the 2000's*



*Scan & view  
"The Power of Camp"*



*History collage from the 2010's*

**Executive Team:**  
**Steve Bornemann,**  
 Chief Financial Officer/Director of Facility  
**Phyllis Bornemann,**  
 Director of Operations/Marketing  
**Jason Mocherman,**  
 Director of Summer Program

**Year Round Team:**  
**Derek Bornemann**  
 Grounds/Finance  
**Tim Dohm,**  
 Ropes Course/Grounds  
**Elizabeth Kretzer,**  
 Food Service Manager  
**Cindy Poster,**  
 Housekeeping  
**Emmalee Raigoza,**  
 Guest Relations/Camp Registrar  
**Curtis Whalin,**  
 Maintenance/Grounds

**Specialty Consultant:**  
**Bill Redmon,**  
 Minister of Disabilities



*Enhancing Trust*

**LAKEAURORA.ORG**





2021 - 2022

## Trustee Officers

President

Todd Thomas

Vice President

Brad Weaver

Secretary

Aaron Fusselman

Treasurer

Steve Bornemann

## Annual Report Index

Section 1

Organization

Section 2

Reports

Section 3

Financial

Section 4

Program



Lake Aurora Christian Assembly, Inc.  
237 Golden Bough Road  
Lake Wales, Florida 33898-9410